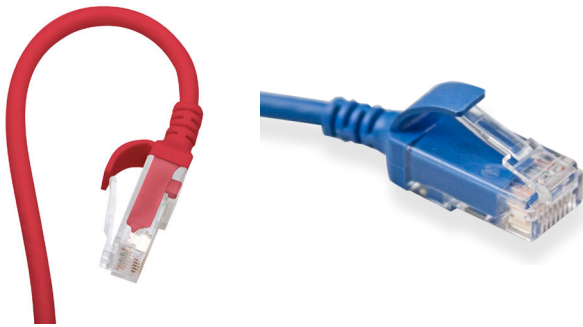


eXtreme® High-Flex Cat 6 Patch Cords - Europe

APPLICATION

eXtreme High-Flex Cat 6 Patch Cords are designed to be used in Cat 6 / 1-Gigabit applications and all frequencies from 1 to 250 MHz. Patch cords offer flexible, high-density patching. Cables support high-speed data applications. They reduce patch cord density in a 24-port patch panel by 38 percent when compared to typical Cat 6 patch cords.



SPECIFICATION

Patch cords shall provide 1 Gigabit application performance for cross connecting in systems comprising of equipment, cable, and appropriate connectors. The patch cords shall be 28-gauge, unshielded, twisted-pair, stranded conductor construction with a standard 8-position modular plug on both ends. Plug contacts shall be plated with minimum of 50 µm of gold and rated to 2,500 mating cycles. Patch cords shall have an outer diameter of 0.15 inches and shall be available in white, yellow, grey, black, red, green, and blue.

WARRANTY INFORMATION

Note: Limited Product and Limited Extended Warranties are rendered VOID if the installed structured cabling system is used for PoE applications that exceed the Product's specified power rating.

For a copy of Leviton product warranties, visit www.leviton.com/warranty.

FEATURES

- Available in white, yellow, grey, black, red, green, and blue
- Available in stock lengths of 0.6, 0.9, 1.5, 2.1, 3.0, 4.2, 4.5, 5.1 and 6.1 metres
- Power over Ethernet (PoE and PoE+) compatible
- Accommodate use in high-density switches, routers, and other electronics
- Bend radius is a narrow 15.2mm, versus 25.4mm for typical Cat 6 patch cords
- Snagless plug design with integrated strain-relief boot
- Plug contacts rated to 2,500 mating cycles
- Dual-rated cable jacket (CM/LSZH)

DESIGN CONSIDERATIONS

- Designed to provide connectivity for Cat 6 / 1-Gigabit applications
- Available in a variety of colours for colour coding or organisation
- Channel length subject to 1.95 derating factor as illustrated in the examples below:
 - Supports 96-metre channels that include 90-metre permanent links
 - Supports 93-metre channels with 10 metres of patch cords included in the channel

STANDARDS COMPLIANCE

- ANSI/TIA-1096-A (formerly FCC Part 68)
- Draft ANSI/TIA-568.2-D
- ISO/IEC 11801
- EN 50173-1
- RoHS compliant
- UL 444 - CM
- IEC 60332-1 [1,2] (2004-07), 60754, 61034
- IEEE 802.3at (Type 1) PoE up to 15.4 watts
- IEEE 802.3at (Type 2) PoE+ up to 30 watts - maximum bundle size of 100 cords
- Supports proposed IEEE 802.3bt Type 3 (24 cables in a bundle) PoE applications

PHYSICAL SPECIFICATIONS

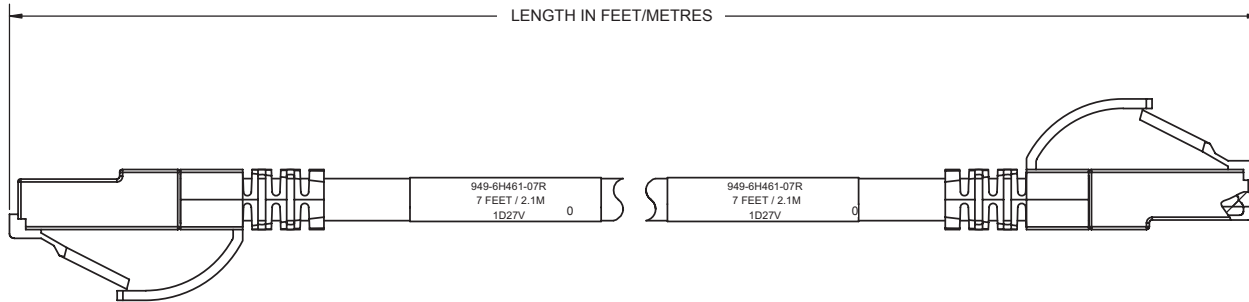
Dimensions:	0.6, 0.9, 1.5, 2.1, 3.0, 4.2, 4.5, 5.1 and 6.1 metres
Materials:	28-gauge, stranded UTP, standard modular non-keyed, 8-position, 8-conductor plug, 94V-0 rated
Cable Outer Diameter:	3.8mm
Bend Radius:	15.2mm

COUNTRY OF ORIGIN

China

ELECTRONIC FILES

For CAD files, typical specs, or technical drawings (.DXF, .DWG), visit www.leviton.com.



6H460-XX*

PART NUMBERS

EXTREME® HIGH-FLEX CAT 6 PATCH CORDS

Description	White	Yellow	Red	Blue	Green	Grey	Black
High-Flex Cat 6 Patch Cord, 2 feet (0.6 m)	6H460-02W	6H460-02Y	6H460-02R	6H460-02L	6H460-02G	6H460-02S	6H460-02E
High-Flex Cat 6 Patch Cord, 3 feet (0.9 m)	6H460-03W	6H460-03Y	6H460-03R	6H460-03L	6H460-03G	6H460-03S	6H460-03E
High-Flex Cat 6 Patch Cord, 5 feet (1.5 m)	6H460-05W	6H460-05Y	6H460-05R	6H460-05L	6H460-05G	6H460-05S	6H460-05E
High-Flex Cat 6 Patch Cord, 7 feet (2.1 m)	6H460-07W	6H460-07Y	6H460-07R	6H460-07L	6H460-07G	6H460-07S	6H460-07E
High-Flex Cat 6 Patch Cord, 10 feet (3.0 m)	6H460-10W	6H460-10Y	6H460-10R	6H460-10L	6H460-10G	6H460-10S	6H460-10E
High-Flex Cat 6 Patch Cord, 14 feet (4.2 m)	6H460-14W	6H460-14Y	6H460-14R	6H460-14L	6H460-14G	6H460-14S	6H460-14E
High-Flex Cat 6 Patch Cord, 15 feet (4.5 m)	6H460-15W	6H460-15Y	6H460-15R	6H460-15L	6H460-15G	6H460-15S	6H460-15E
High-Flex Cat 6 Patch Cord, 17 feet (5.1 m)	6H460-17W	6H460-17Y	6H460-17R	6H460-17L	6H460-17G	6H460-17S	6H460-17E
High-Flex Cat 6 Patch Cord, 20 feet (6.1 m)	6H460-20W	6H460-20Y	6H460-20R	6H460-20L	6H460-20G	6H460-20S	6H460-20E

Lengths of 3–20 feet (0.9–6.1 metres) are component rated; all other lengths are channel rated.

Make-to-order lengths are available from 1–100 feet (0.3–30.5m), in 1-foot (0.3m) increments. Go to Leviton.com/configurator.



<p>Leviton Network Solutions 2222 - 222nd St. SE Bothell, WA 98021-4416</p> <p>tel 1-800-824-3005 tel +1-425-486-2222 appeng@leviton.com www.leviton.com</p>	<p>Asia / Pacific T +1.631.812.6228 E infoasean@leviton.com</p>	<p>Canada T +1.514.954.1840 E pcservice@leviton.com</p>	<p>Caribbean T +1.954.593.1896 E infocaribbean@leviton.com</p>	<p>China T +852.2774.9876 E infochina@leviton.com</p>	<p>Colombia T +57.1.743.6045 E infocolombia@leviton.com</p>
	<p>Europe T +44.0.1592.772124 E customerserviceeu@leviton.com</p>	<p>India / SAARC T +971.4.886.4722 E infoindia@leviton.com</p>	<p>Mexico T +52.55.5082.1040 E lsamarketing@leviton.com</p>	<p>Middle East & Africa T +971.4.886.4722 E lmeinfo@leviton.com</p>	<p>South Korea T +82.2.3273.9963 E infokorea@leviton.com</p>