

50x50mm Adaptor Collar

Datasheet: GD069647v2

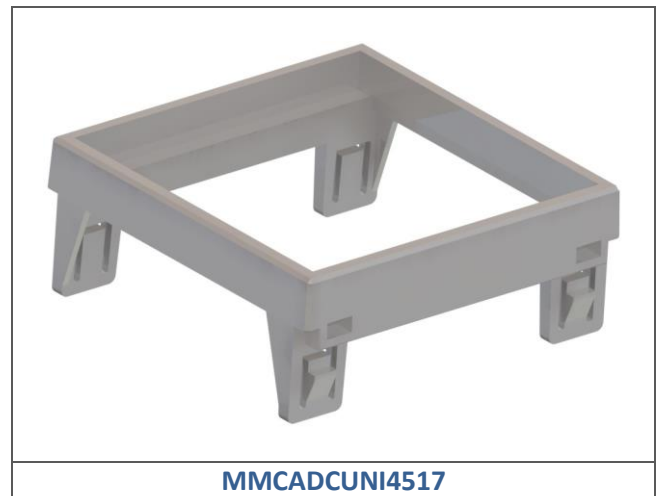
APPLICATION

This product will increase the 'adaptability' of Brand-Rex range of 45x45mm SIJ and Fibre Faceplate modules. The Adaptor Collar now allows for the attachment of full range of Brand-Rex 45x45mm Modules to Brand-Rex range of Faceplates with 50x50mm apertures and as such making them 'multi-region' capable.

Attachment is done via 4, easy action, robust retention clips capable of multiple operations.

FEATURES

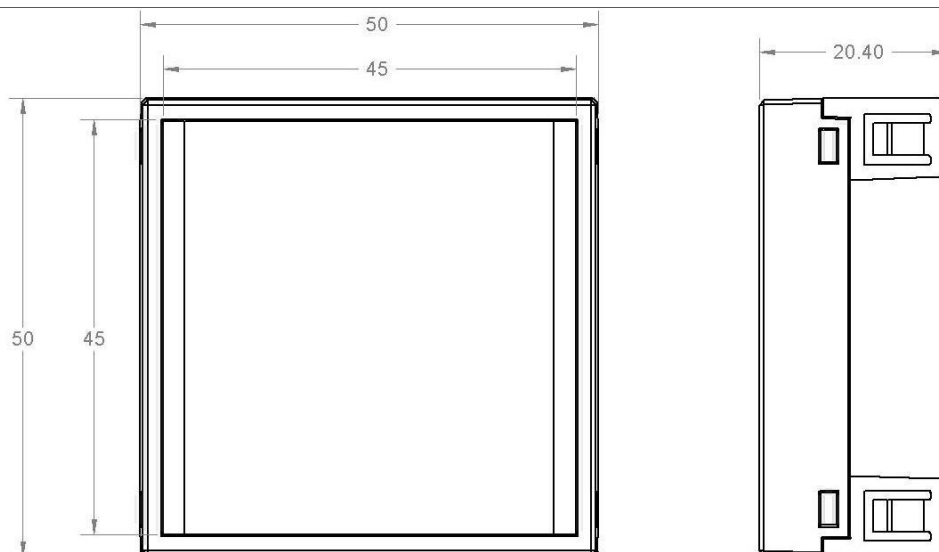
- Suitable for Brand-Rex approved SIJ Modules and Fibre Faceplate Modules.
- Colour Traffic White RAL 9016 (other colours available on request).
- Allows for attachment of 45mm Square Modules to 50mm Square Aperture Faceplates.
- Snap features for easy installation.
- Material ABS (fully recyclable).



ORDER INFO

Brand-Rex Part Number	Item Description	Colour	Weight per Item (nom)	Qty per Pack
MMCADCUNI4517	50x50mm Adaptor Collar	White (RAL9016)	5g	10

PHYSICAL CHARACTERISTICS



COMPATIBILITY MATRIX

Catalogue Number	Description
MMCANGLGS45002	Angled SIJ Module 45x 45 Single Port
MMCANDLGD45002	Angled SIJ Module 45 x 45 Double Port
FPCANGLCMM3	Fibre Faceplate Module LC Duplex MM
FPCANGLCSM3	Fibre Faceplate Module LC Duplex SM
FPCANGL4MM3	Fibre Faceplate Module LC Quad MM
FPCANGL4SM3	Fibre Faceplate Module LC Quad SM
FPCANGDCMM3	Fibre Faceplate Module SC Duplex MM
FPCANGDCSM3	Fibre Faceplate Module SC Duplex SM

*“Brand-Rex is **dedicated to designing, developing and manufacturing** sustainable **high performance** structured cabling and speciality **cabling solutions**”*

The information contained in this document is valid and correct at the time of issue. Brand-Rex reserves the right to modify details without notice in light of subsequent standard/specification changes and ongoing technical developments.