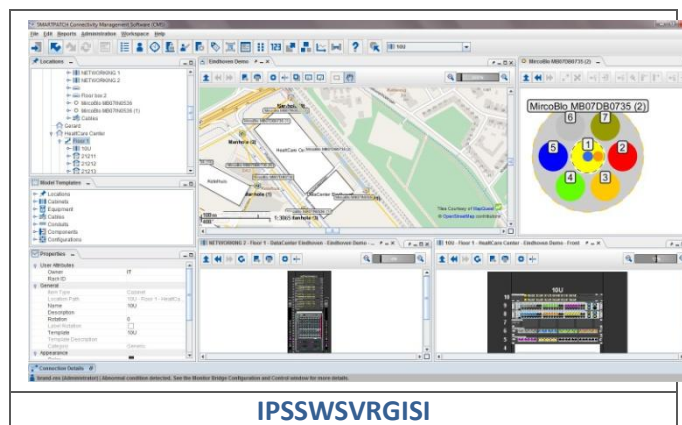


## APPLICATION

The SmartPatch GIS Extension provides a seamless mechanism for integrating geographical maps into SmartPatch graphical location overviews. Geographical maps are automatically loaded into the overview and SmartPatch objects in these locations, such as buildings, manholes, conduits and cables are then accurately represented and managed in terms of their geographical coordinates. The SmartPatch GIS Extension is suitable if you would like to manage campus, city or inter-city Outside Plant physical assets and connectivity in SmartPatch.

## FEATURES

- Automatic positioning of buildings, manholes, conduits and cables according to GPS coordinates
- Automatic geographical location of splicing equipment
- Conduit / cable lengths calculations
- Connection attenuation calculations
- Pinpoint distances on a map along a connection (for example, to use with OTDR trace results)



**IPSSWSVRGISI**

## ORDER INFO

Brand-Rex Part Number	Item Description	Integration
IPSSWSVRGISI	SmartPatch enhanced software - Server - In-house - GIS integration	System integration possibilities when using IPSSWSVR20R as the basic requirement
IPSSWSVRGISI-CA	SmartPatch enhanced software - Software as a Service - Manage SaaS GIS integration annual contract	System integration possibilities when using IPSSWSVR20R-CA as the basic requirement

## MAP INTEGRATION

With simple configuration steps, geographical maps can be integrated into SmartPatch from any of the following map sources.

- Open Street Map servers
- ESRI® ArcGIS® servers
- Web Map Service (WMS) servers
- Web Map Tile Service (WMTS) servers

The map sources may reside on the internet or may be private servers with your organization, for example to leverage your existing internal mapping services

In addition to retrieving maps dynamically from map servers, SmartPatch also supports the option of integrating static images, such as campus plans into SmartPatch geographically aware overviews.

## DATA INTEGRATION

---

Position and feature data relating to SmartPatch objects in geographical location overviews can be easily interchanged via CSV, KML and GeoJSON format, either manually via the SmartPatch GUI or automatically via the SmartPatch API.

---

*“Brand-Rex is **dedicated** to **designing, developing and manufacturing** sustainable **high performance** structured cabling and speciality cabling solutions”*

The information contained in this document is valid and correct at the time of issue. Brand-Rex reserves the right to modify details without notice in light of subsequent standard/specification changes and ongoing technical developments.